

## Shower - Regen- und Schwallbrause eingebauter

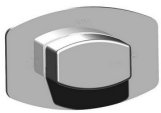
---

Codice kit: 1100 SDI-040

Regen- und Schwallbrause eingebauter Thermostat – 2 Ausgänge

## Componenti

---



### **Thermostatmischer**

---

Cod: 1100T550A00

AP-Thermostatmischer

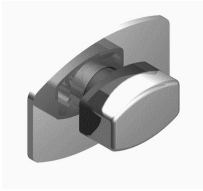


### **Rohteil**

---

Cod: 2900D801A00

2-Wege UP-Thermostatmischer (1 Umsteller) - UP-  
Teile



## Umstellerarmatur

---

Cod: 1100Y407AA0

Absperrventile (AP-Teile)

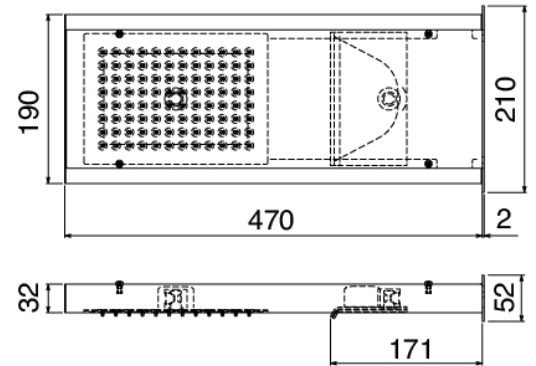


## Kopfbrause

---

Cod: 11000423A00

Regen- und Schwallbrause



## Finiture disponibili:

---

finiture speciali su richiesta salvo quantitativi minimi di ordine garantiti



acciaio spazzolato

ASAS